

Lead-Free Wave & Selective Soldering Workshop

Tuesday 5th December

Wootton Bassett, Wiltshire

For many organisations through hole components will remain a reality for many years. More and more surface mount components are used in design, through hole is in decline, however the reality is connectors, transformers, switches, LCD displays and electrolytic capacitors are still necessary in many products. So what is the most reliable and cost effective solution to through hole soldering in a lead-free environment?

Explanations, new innovations and practical advice are available on Tuesday 5th December !!!!!

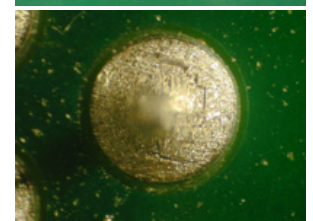
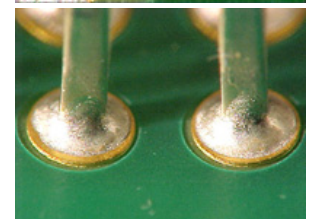
Who should attend?

This event is ideally suited to engineers, quality and inspection staff, production operators and any member of staff tasked with looking at yield monitoring and process improvements on their soldering processes. Managers and supervisors would also benefit from a fuller understanding of the issues currently being experienced in industry.

The workshop will cover:

- Why use selective soldering
- User experience of selective and wave soldering with lead-free
- PCB design rules for selective soldering
- Flux requirements for wave and selective soldering
- Compatibility of solder masks and lead-free solder
- Setting up lead-free profiles
- Solder alloy choices
- Cost of lead-free process operation
- Inspection criteria for lead-free joints
- Copper dissolution with selective and wave soldering
- Soldering defects on selective and wave – Causes and Cures

Plus Factory Demonstration of Lead-Free Assembly



Directions to venue

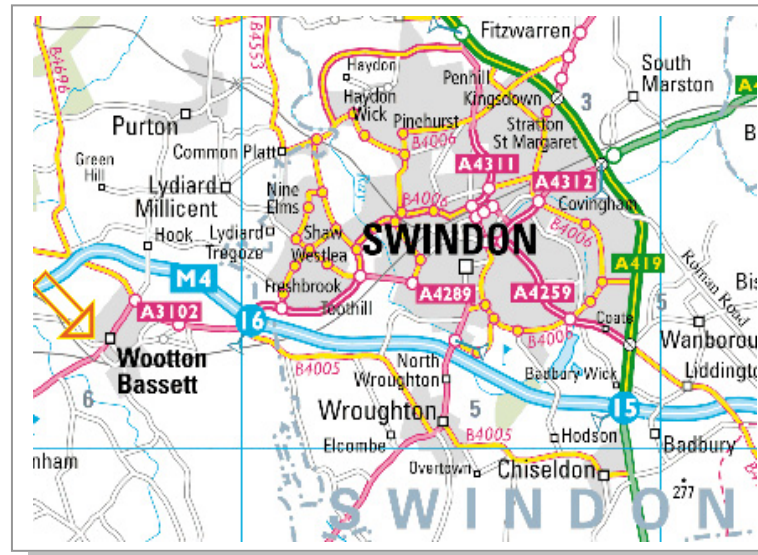
Dolby Laboratories, Inc. Wootton Bassett, Wiltshire SN4 8QJ England
Telephone (44) 1793-842100 Fax (44) 1793-842101

By Car from M4 Motorway

Leave Motorway at Junction 16. Follow signs to Wootton Bassett (A3102). At roundabout take first exit to Interface. Cross next roundabout (2nd exit) and take first turning right into Interface. Turn right at T-Junction. Dolby Laboratories is straight ahead.

By Train from London Paddington

Frequent service leaves Paddington station at approximately 15-minute intervals during peak times. Journey time to Swindon is approximately one hour. A taxi from Swindon station to Dolby Laboratories takes approximately 10-15 minutes.



To book your place fax your booking form to SMART Group registration 01494 473975

Please reserve _____ places at the workshop on 5th December 2007
£75 SMART Group members/£125 Non members + VAT)

Name: _____ Name/s: _____

Company: _____ Address: _____

Telephone: _____ Fax: _____

Email: _____ @ _____

Emails: _____ @ _____

Card type: Visa or Mastercard Card no: _____

Card expiry date: _____ Card security code (3 numerals on signature strip) _____

Signature: _____

SMART Group Event Diary 2007-2008

July 4th	Polymers In Electronics NPL	Teddington
Sept 11th	Improving Product Reliability	Scotland
Sept 12-13th	Manufacturing Reliability & Economy	Wales
Sept 18th	Hand Soldering & SMT Rework	Oxfordshire
Oct 23rd	A-Z of Modern PCB Assembly	Leicestershire
Nov 8th	PCB Design & Manufacture	Scotland
Dec 5th	Wave & Selective Soldering	Wiltshire

Table Top Exhibition Space

If you would like a table top at a SMART Group event please contact Tony Gordon to discuss availability on the diary dates above. Space is not available at all SMART Group events.

SMART Group, 85 Easton Street, High Wycombe, Bucks HP11 1LT
Telephone: +44 (0) 1494 465217 Facsimile: +44 (0) 1494 473975
info@smartgroup.org www.smartgroup.org www.leadoutproject.com